

Feb 2014 | No.319

# 今日家居®

INNOVATION IN LIFE - STYLE

## TODAY'S LIVING



Cover Story

### Smart Living – Magic Light Show

型格智能家居 — 光·影變奏

Special Supplement

客廳傢具添新意 Creating a Comfy Living Room



HK \$35 9771018-578003  
A Bilingual Interiors Monthly  
室內設計

DESIGN | special report



## London Design Festival 2013

Text by Ling Lam, Sally Tsang & Valerie Yeung

2013 年已成過去，但於九月份圓滿結束的第 11 屆倫敦設計節依然叫人回味。早前為大家介紹了部分展品，今期繼續帶來更多精彩作品，啟發你的設計靈感。While we have just finished rolling in the New Year, the delights of September 2013 remain fresh in the minds of many, thanks to the extraordinary 11th annual London Design Festival, which we covered as a special report in the December issue of *Today's Living*. This month we continue to by inspire you sharing the highlights of the impressive creations staged at the fair.





## ON FINGER

by *Agnieszka Bar*

ON FINGER 是一系列簡約而精緻的玻璃器具，包括花瓶、杯和碗，器具中間的凹位確保手指能緊貼器具，觸感舒適無比。

Sophisticated yet simple and practical, the ON FINGER range features a collection of vases, drinking glasses and snack bowls that have been carefully finished with a unique indentation in the middle, which allows you to immerse your fingers in the glassware for maximum comfort.

## Clover

by *Piotr Kuchciński*

Clover 系列的靈感源於象徵幸運的四葉草，是色彩鮮豔的針織傢具，備有腳椅、吧檯椅和矮椅設計，而且只要在椅上放置檯面，便能化身為桌子，十分便利。

Referencing the four-leaf clover good luck symbol, the Clover family is finished with fancy colours and a variation of sewing techniques. The collection consists of a pouf, a barstool, and a stool that can be used as a table with the addition of a simple tabletop.



## Draw Me Yellow

by *Tomasz Walenta for Porcelain Kristoff*

波蘭設計師 Tomasz Walenta 為營造出與經典裝飾截然不同的對比效果，大膽地利用鮮黃色塗鴉圖案點綴瓷杯，在傳統物料上表現出自由不羈的感覺。

To create a contradiction of classic embellishment, Polish designer Tomasz Walenta has decorated this porcelain collection with bold yellow scribbles, expressing a sense of freedom on a traditional material.

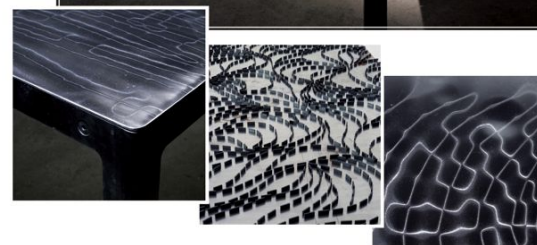


## Magnetic Fields

by *Tord Boontje*

Magnetic Fields 採用樹脂塗層，融合可隨着磁場變動的 3D 全像素圖案，觀感鮮明、震撼。這個技術已應用於傢具設計上，將來可望延伸至時裝、建築及其他設計範疇，營造獨特的視覺效果。

Magnetic Fields is a collection of resin-coated surfaces that feature eerily deep three-dimensional holographic patterns that change with electromagnetism. This technique has now been applied to furniture and could potentially be used in clothing, architectural cladding and many more design domains to create a strong visual impact.



## The Copper Mirror Series

by *Hunting & Narud*

設計師 Hunting & Narud 以銅作為 The Copper Mirror Series 的主要材質，指出挪威過往曾是強大的銅礦開採國家。圓形的銅鏡在樞軸上轉動，呼應太陽能系統的外形和轉動方式。

Designers Hunting & Narud have used copper in this series of mirrors, alluding to Norway's once strong mining credentials. Their pivoting circular forms pay tribute to the visual language and movement of different elements of the solar system.

© Gideon Hart

## Ripple Table

by Benjamin Hubert

利用最少物料達至最高效能，是設計師 Benjamin Hubert 的設計意念。這張由加拿大航空膠合板製造的 Ripple 長檯雖達 2.5 米，但極度輕巧，一人之力已足夠將長檯提起。相比一般的實木長檯，Ripple 所耗費的物料少了 70 至 80%，非常環保。

Made entirely from three-ply 8mm birch aircraft plywood sourced from Canada, the 2.5m-long Ripple table has a minimalist design and is extremely lightweight. It is constructed using 70-80 percent less material than a standard timber table and can be easily assembled by a single person.

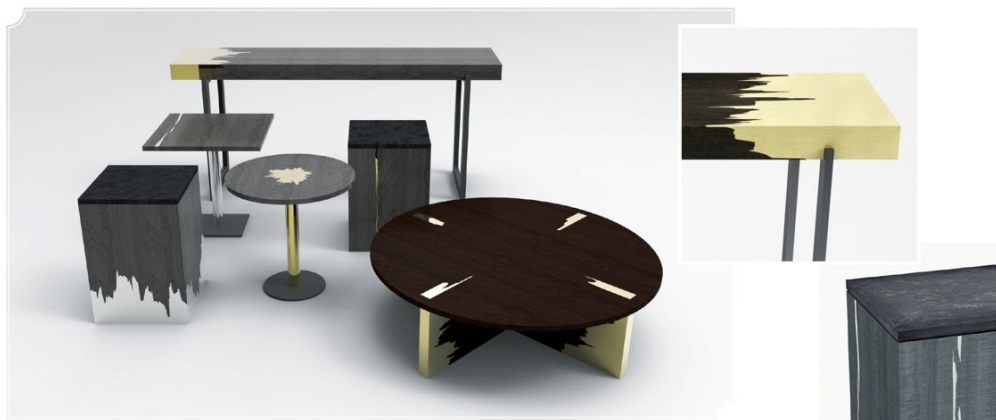
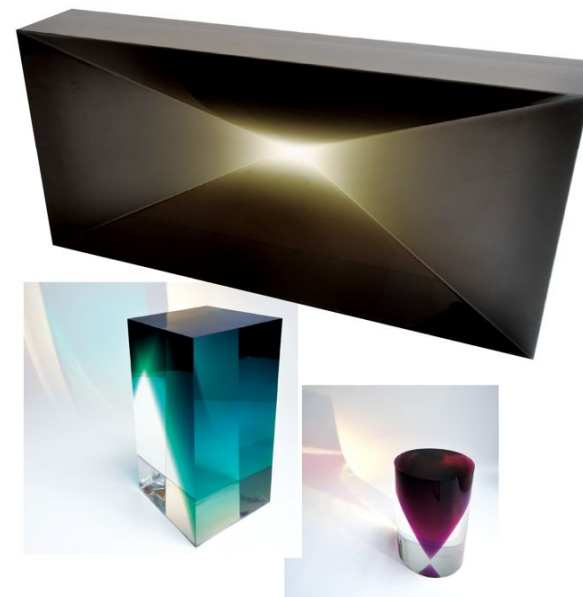


## Block ABC

by Andy Martin

Block ABC 可作茶几或椅子之用，這三件傢俱由聚酯樹脂製造，經染色處理的 Block ABC 散發炫目光芒，帶來強烈的視覺效果。通透的聚酯樹脂看來輕盈，實際卻是沉重非常，以視感錯覺為家居帶來玩味效果。

Block ABC is a collection of three blocks, which function as a stool, side and coffee table. Cast from clear polyester resin and then pigmented, the blocks create a hallucinatory visual experience and a contradiction thanks to its transparency.



## Graft Collection

by Simon Hasan for Linley

英國設計師 Simon Hasan 為 Linley 創作的 Graft Collection 散發木材的自然美。設計師以複雜的鑲嵌技術凸顯原始木材的瑕疵，搭配黃銅、胡桃木和鋼材等物料，表現木材傢俱的缺憾美。

The Graft Collection, which includes coffee, console, side and occasional tables, showcases a collaboration between British designer Simon Hasan and Linley that celebrates the natural imperfections in timber, which are usually removed through expert craftsmanship. These inherent faults are highlighted with complex marquetry techniques and materials such as brass, walnut and steel, which are used to create an exquisite finish.

## Patternity Warp and Reason

by Richard Brendon and Patternity

骨瓷在英國已使用多年，為探索這經典物料的可塑性，Richard Brendon 和 Patternity 創作出 Warp and Reason 這套型格時尚的骨瓷茶具。瓷器綴以鈷藍色間條花紋，碟沿的金線勾勒出瓷茶具的輪廓，典雅別致。

Patternity Warp and Reason offer a unique, modern interpretation of British bone china. Featuring burnished gold and cobalt blue stripes; the collection makes a bold statement and a stylish dining experience. ↗

