

STARTING FROM SCRATCH
Amid the rubble with the Red Cross
as they help to rebuild Haiti

MESSAGE IN A BLANKET
Quilt-making gets subversive

FOOD & HOME
From art-making to tart-baking;
at home with the writer of *The Very
Hungry Caterpillar*

Leading by example

Fabio Capello makes his point.
Interview by Chris Heath

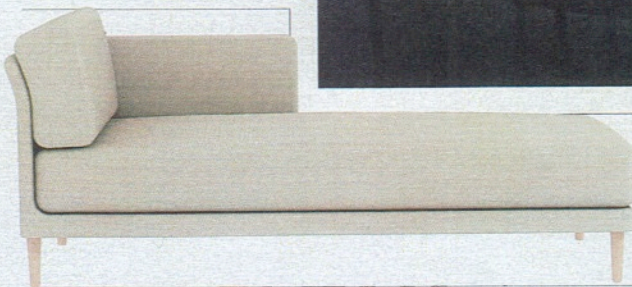
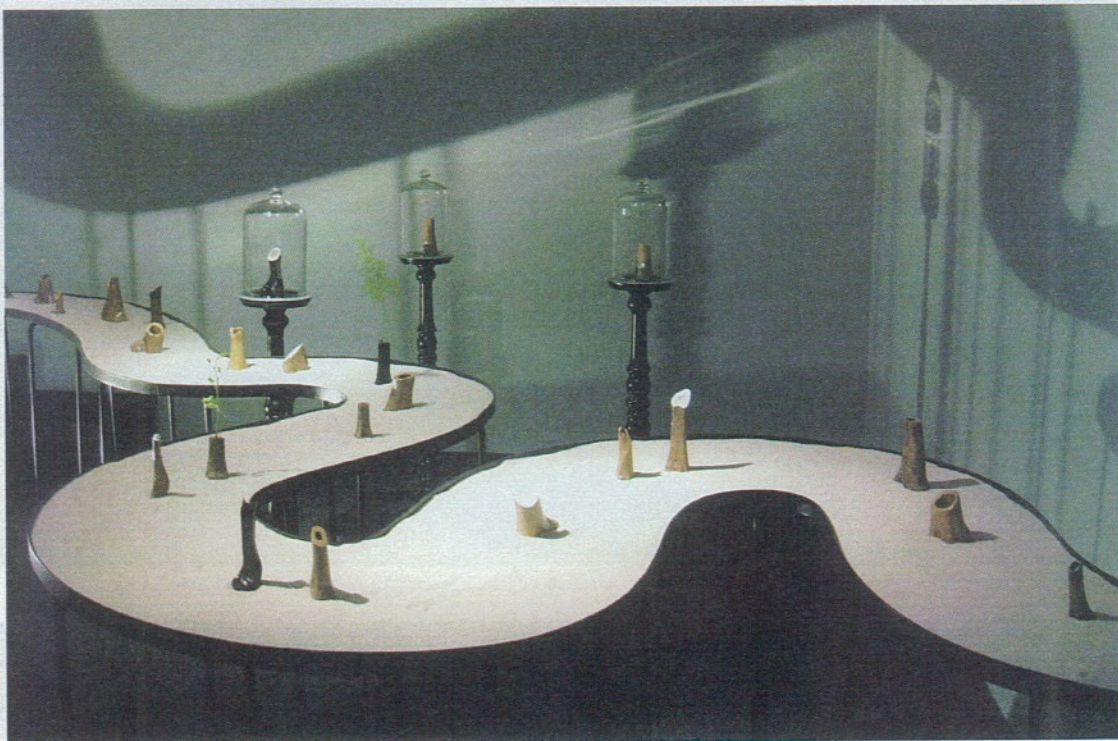


Design notebook by David Nicholls

SKELETON CREW

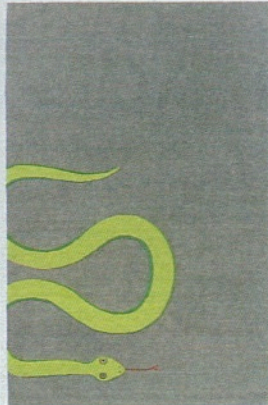
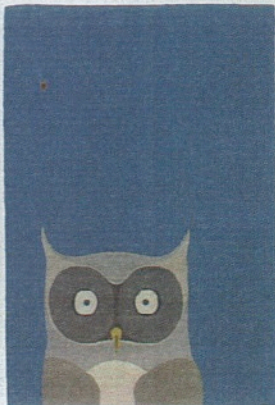
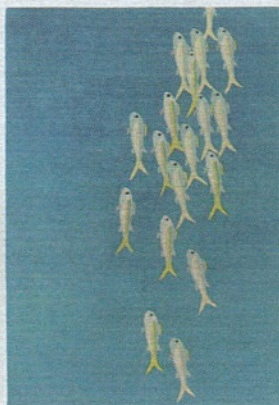
Libby Sellers's pop-up gallery is currently exhibiting new work by Julia Lohman and Gero Grundman. The show, called Tidal Ossuary, features a potentially macabre collection of bones that the duo found washed up along the Thames.

They believe this detritus made its way from the Smithfield meat market to the river via the sewers in the 19th century. Each unique piece has been given a new purpose – and value – by being turned into polished vessels that incorporate elements of silver, resin and stainless steel. Until March 4 at Jacqueline Rabun Space, 32 Grosvenor Crescent Mews, London SW1 (07774-113813; libbysellers.com).



SITTING PRETTY The Theo range of upholstered furniture is among the designer Matthew Hilton's latest creations for Case. The seat pads are generous and plump, the slimline arm rests tilt out at an elegant angle, and the skinny turned solid oak legs seem dainty with their gentle taper. A three-seat sofa costs £2,500, this corner chaise is £1,800, and the corner sofa system from £3,699, at John Lewis (08456-049049; johnlewis.com).

STEP THIS WAY The British design duo Ed Barber and Jay Osgerby have come up with four new rugs for the Rug Company. The motifs comprise a school of fish, the perfect owl, a slithering snake, and butterflies. A 2.29x1.52cm rug made from hand-knotted Tibetan wool costs £1,985; prices start at £570/m² (020-7229 5148; therugcompany.info).



MADE IN BRITAIN Original BTC has been making lighting in Britain for 20 years. There are three production facilities dedicated to constructing its designs, which vary from contemporary to classic. Aluminium shades and bases are hand-spun from sheet metal in Sheffield, the heart of the country's metalworking industry, while bone china shades are hand-cast in Stoke-on-Trent. (When the company's founder, Peter Bowles, visited the shade manufacturer and discovered that the factory was under threat of closure, he bought it and kept on all the staff.) The lights are finally hand assembled in Oxford. Shown here is the aluminium Hugo table light, £250 (020-7351 2130; originalbtc.com).